

THE TIMES
THE SUNDAY TIMES
**GOOD
UNIVERSITY
GUIDE
2017**
WELSH
UNIVERSITY
OF THE YEAR



Swansea University
Prifysgol Abertawe



SELF-GUIDED
**CAMPUS
TOURS**

★ **UK TOP 15** ★
FOR STUDENT
SATISFACTION
(NSS 2016)

★ **UK TOP 30** ★
IN THE 2014 RESEARCH
EXCELLENCE FRAMEWORK
(REF)

★ **WINNER** ★
FOR COURSES
AND LECTURERS
*(Whatuni.com Student Choice
Awards 2016)*



Welcome to Swansea University

SINGLETON PARK CAMPUS

This guide provides information about the University and its facilities for visitors who wish to conduct their own 'self guided' tour around the campus. A map of the campus can be found on page 14.

You are welcome to explore the campus at your leisure, however if you would like to view a specific department then you may find a weekday visit more beneficial as the majority of buildings and facilities are closed on weekends. For departmental visits, please contact the department directly to see when it is possible to visit. Contact details for all departments can be found on our course pages: www.swansea.ac.uk/undergraduate/courses/

Swansea University has been equipping students for exceptional personal and professional achievement since 1920. We have a long history of working closely with industry, which ensures that our degrees meet employers' needs and that our world-leading research has a strong impact on the health, wealth, culture and well-being of society.

Our campus lifestyle provides a safe and welcoming community. Set in parkland directly opposite

Swansea Bay, Singleton Park Campus is still within easy reach of the city centre and all its transport links.

Swansea University has two campuses - both of which are in stunning and unique locations. We hope that you enjoy your day here at Singleton Park Campus. If you would also like to visit our other campus - Bay Campus - please turn to page 9.

If you would like to stay overnight in Swansea, the city has a large range of accommodation options, many of which are illustrated here: www.visitswanseabay.com



For further information about Swansea University, please contact the Student Recruitment Office on **+441792 295784** or email us at: sro@swansea.ac.uk

Did you know ?

that Swansea University...

HAS OVER

17,000

STUDENTS



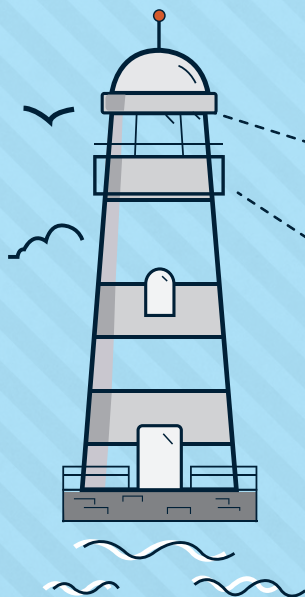
Was the first campus-based University in the UK

Won the Times and Sunday Times' Good University Guide

WELSH UNIVERSITY OF THE YEAR 2017

★ Is in the **UK TOP 15** ★
FOR STUDENT SATISFACTION (NSS 2016)

Is in the **UK Top 30 for Research** (REF 2014)



CAMPUSES AND OPEN DAYS

SINGLETON PARK CAMPUS IS HOME TO THE...

College of Arts and Humanities
College of Human and Health Sciences
College of Law and Criminology
Medical School
College of Science

BAY CAMPUS IS HOME TO THE...

College of Engineering
School of Management

We hold Undergraduate Open Days throughout the year.

Please see swansea.ac.uk/makingwaves for further details and to book a place.



SINGLETON PARK CAMPUS TOUR



START AT FULTON HOUSE (17)

Fulton House is a Grade II listed building that is home to many of the University's facilities, such as a CostCutter supermarket, Blas café, Fulton Outfitters merchandise store, ATMs, the University's travel shop and a Post Office. On the first floor, you will find the Refectory and Fusion Café. On the second floor, there is our Students' Union bar – JCs – which serves a range of alcoholic and non-alcoholic drinks and food. In the summer, the balcony is a popular place for students and visitors, with stunning views across Swansea Bay.

Fulton House also houses numerous seminar teaching rooms and Discovery – Swansea's student-led charity that facilitates volunteering opportunities.

As you leave through the main entrance of Fulton House, turn right, cross the road and walk towards the **Wallace Building (9)**. The Wallace Building is home to two of the largest departments on campus – Biological Sciences on the ground floor, and Geography on the first floor. Both departments have been rated 'excellent' for teaching. Biological Sciences has its own botanic gardens, zoology museum and 'aqua centre' as well as its own research vessel, the RV Noctiluca.



Directly opposite the main entrance to the Wallace Building is the **Glyndŵr Building (11.1)** and the **Grove Building (12)**.

Glyndŵr is home to the College of Human and Health Sciences (specifically Nursing, Healthcare Sciences, Social Work) as well as Physics. **Grove** houses Swansea's Medical School, which runs a four-year Graduate Entry Medicine scheme as well as world-leading facilities for medical research.

Turn left and walk along the pavement until you reach the **Institute of Life Science 1 (33)**. The



Institute of Life Science (often referred to as 'ILS1') is Swansea's £50m collaboration between IBM and the University. It houses one of Europe's largest IBM super-computers (named 'Blue C') and has established Swansea as a world-class centre for life science research. ILS1 is also home to the UK Research and Development team from *Boots*. On the first floor of ILS1 there is Café Glas, serving Starbucks coffee and a range of snacks.

Continuing up the road will lead you to the **Data Science Building (11.4)** and the Institute of **Life Science Phase 2 (ILS2) (36)**. The Data Science Building is a world-class centre in eHealth and administrative data research, training and development through powerful, robust, state-of-the-art data linkage and analysis facilities.

ILS2 is a £30m expansion of ILS1, providing facilities for Medical Engineering and Nanomedical research.

Continue past the ILS Buildings and head through the door on your right hand side which leads you into **Vivian Tower (11.2)**. The Vivian Tower is home to Psychology, Midwifery, Osteopathy, Paramedic



Science and Maternity Care. Situated in the courtyard between the Vivian Tower and the Glyndwr Building is a statue of Confucius, which was donated to the University in 2009 by the Chinese government to symbolise the close links the University has with China. Student folklore says that rubbing the statue will bring you luck in exams.

Continue through the foyer of the Vivian Tower and leave via the door directly in front of you. Turning left will lead you to the **Haldane Building (16)**. Haldane is home to the main information office for Human and Health Sciences, as well as Health and Social Care, Social Policy and Social Sciences.

Turn right towards the large accommodation blocks. On the left hand side is a small car park. At the rear of the car park is the **Richard Price Building (14)**. Richard Price houses the College of Law and Criminology. Swansea University's law department has its own specialist law library and moot court as well as an active Student Law Society.

CAMPUS ACCOMMODATION

Approximately 1,300 students are housed in our on-campus accommodation, which consists of a range of self-catered and part-catered flats housing between 8 and 16 students. The original campus hall blocks – Kilvey (19.1), Preseli (20), Cefn Bryn (21) and Rhossili (21.2 and 21.3) have all been recently refurbished on the inside to increase the amount of living space available to students and introduce larger kitchens and bathrooms. The smaller hall blocks of Oxwich (25), Langland (26) and Caswell (27) are all self-catered and en-suite accommodation. The newest accommodation blocks are Penmaen (22) and Horton (23) and these are all en-suite and self-catered.

Based on the ground floor of Penmaen, the University Health Centre is a NHS General Practice that provides friendly comprehensive medical services. There is also a separate Dental Surgery based in the Horton Building that offers a full range of NHS and private treatments.

SPORTS VILLAGE

It is a small walk back on yourself (through the grounds of Singleton Hospital, with ILS2 on the left hand side) across the road to the £20m University Sports Village. The Sports Village is home to the Wales National Pool, which is one of British Swimming's Performance Centres, housing a 50m Olympic size pool and 25m warm-up pool. The pool is the training base for many elite level athletes, including four-time Paralympic Gold Medallist Ellie Simmonds.

The Sports Village has a multi-purpose sports hall, three squash courts, and a fully-equipped fitness room with over 80 stations. These facilities were recently enhanced to include a new 8-lane athletics track, two outdoor all-weather pitches and an indoor training centre for athletics. In the run up to the 2012 Olympics and Paralympics, the University was host to members of the British Paralympic Swimming Squad and welcomed the entire New Zealand and Mexican Paralympic teams. In 2014, the University hosted the International Paralympic Championships. More recently, the Sports Village has hosted teams competing in the 2015 Rugby World Cup, including Canada, Fiji and New Zealand.

Back on the University campus, follow the path along the front of Fulton House (on your left) until you arrive at the **Digital Technium (26)**, which is home to the Students' Union. The Students' Union is at the heart of student life on campus, running a range of societies, events and facilities at the University. Alongside the Students' Union run bar (JCs), supermarket (CostCutter), nightclub (Divas) and cloth/merchandise shop located in Fulton House, the Digital Technium also houses the offices of Students' Union Officers, the Societies and Development Office, the Entertainments Department and the Student Media Centre where the student newspaper The Waterfront and radio station Xtreme Radio are based.

The Students' Union are also responsible for over 100 sport clubs and societies, ranging from Amnesty International, Debating and subject-specific societies, to sports such as rugby, swimming, cheerleading and the ever-popular 'ultimate frisbee.' More information on our clubs and societies can be found at: swansea-union.co.uk

As well as the Students' Union, the Digital Technium also houses the Education Department, which is one of the University's most recent subject schemes.

Directly opposite the Digital Technium, the **Faraday Building (8.1)** is home to the Computer Science department as well as a number of large lecture theatres and work spaces. If you walk through the Faraday Building, you will enter the **Talbot Building (8.3)** where you will find the Mathematics department and various administrative functions of the University, including the International Development Office, Academi Hywel Teifi and the Academic Success Programme (ASP).

Find out more here:

i

swansea.ac.uk/academi-hywel-teifi
swansea.ac.uk/asp
swansea.ac.uk/international

As you leave the Faraday Building, the **Taliesin Arts Centre (32)** and the **Egypt Centre (32.1)** will be on your left. The Taliesin hosts live performances in its 330-seat theatre, cinema screenings on one of Wales' largest cinema screens and various travelling exhibitions. There is also an art gallery, gift shop, restaurant, Lloyds TSB branch and the University's book shop, John Smith.

The Taliesin complex has been extended to house the **Egypt Centre (32.1)** which exhibits Swansea's largest collection of Egyptian artefacts – the fifth largest in Britain.

Continuing along the mall, you will pass the **Library and Information Centre (7)** on your right and the **Keir Hardie Building (3)** on your left.



THE LIBRARY AND INFORMATION CENTRE

Based in the Library and Information Centre, the main library contains over 800,000 books, journals and research articles, has over 1,400 study spaces and over 450 networked PCs for student use. The library is open 24 hours a day, 362 days a year.

Upon registration at the library, students are allocated a username, userspace and email account that allows them free and unlimited use of email and the internet. There is also free wifi throughout all of the campus and University accommodation.

The Library and Information Centre is also home to the Swansea Employability Academy (SEA), which offers advice and assistance to students hoping to find work, training or placements during University and after graduation. Swansea University has been ranked 16th out of more than 200 universities in the UK for its graduate employment record.

KEIR HARDIE BUILDING

Keir Hardie houses the College of Arts and Humanities' department of Modern European Languages, which include French, Italian, German, Spanish and Welsh. The building is also home to Classics, Ancient History and Egyptology, English Language and Literature and the Department of Media and Communication Studies.

Continuing straight on, you will pass **James Callaghan Building (4)** on the left corner and finally reach **Singleton Abbey (2)**.

James Callaghan is home to Politics, American Studies and History. American Studies offers a range of single and joint honour programmes that enable students to spend a year at an American University. Partner institutions include universities in New York, Washington, Arizona, California and New Mexico.

In the 'basement' of James Callaghan Building, there is Callaghan's Café serving Starbucks and a range of snacks.

On your way to Singleton Abbey, you will pass the **Law Library (5)** on your right hand side. Behind the Law Library is Swansea University's award-winning **Mosque (6)**.

Singleton Abbey houses a large range of the University's administrative sections. The building was once the home of the Vivian Family who, in the 19th Century, owned the main copper manufacturing plants in the area. The building is mainly 19th Century mock-gothic, but parts of it date from earlier centuries. If you follow the path to the right, you will pass the ornamental gardens and reach the front of the building, which offers wonderful views over Swansea Bay. The Abbey Meadow is the site of the annual Students' Union Summer Ball, which turns the meadow into a small festival site for the day with three stages, a funfair and a range of bars and food outlets. Previous acts have included Pixie Lott, Tim Minchin, Florence and the Machine and DJ Fresh.

Continuing through the car park at the front of Singleton Abbey and turning left will lead you to one of the entrances to Singleton Park – the largest urban park in Swansea. If you wish to head back to where you began your tour at Fulton House, simply turn left instead of entering the park and walk back down the mall until you come to the roundabout.



Welcome to Swansea University

BAY CAMPUS

This guide provides information about the University and its facilities for visitors who wish to conduct their own 'self-guided' tour around the campus. A map of the campus can be found on page 14.

You are welcome to explore the campus at your leisure, however if you would like to view a specific department then you may find a weekday visit more beneficial as the majority of buildings and facilities are closed on weekends. For departmental visits, please contact the department directly to see when it is possible to visit. Contact details for all departments can be found on our course pages: www.swansea.ac.uk/undergraduate/courses/

Swansea University has been equipping students for exceptional personal and professional achievement since 1920. We have a long history of working closely with industry, which ensures that our degrees meet employers' needs and that our world-leading research has a strong impact on the health, wealth, culture and well-being of society.

Our campus lifestyle provides a safe and welcoming community. Set in a brand new purpose built site,

on the edge of Swansea Bay, and within easy reach of the bustling city of Swansea.

Swansea University has two campuses - both of which are in stunning and unique locations. We hope that you enjoy your day here at Bay Campus. If you would also like to visit our other campus - Singleton Park Campus - please turn to page 5.

If you would like to stay overnight in Swansea, the city has a large range of accommodation options, many of which are illustrated here: www.visitswanseabay.com



For further information about Swansea University, please contact the Student Recruitment Office on **+441792 295784** or email us at: sro@swansea.ac.uk

Did you know ?

that Swansea University...

HAS OVER

17,000

STUDENTS



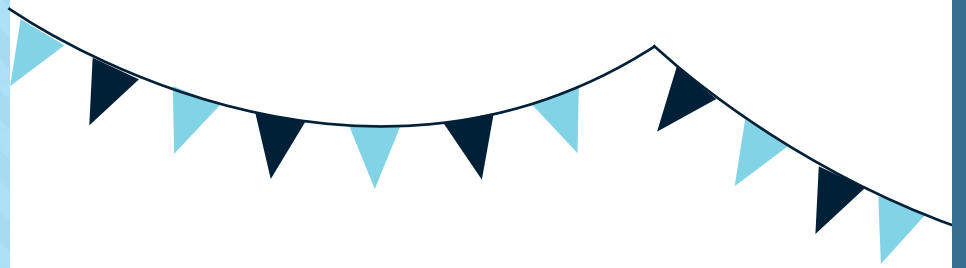
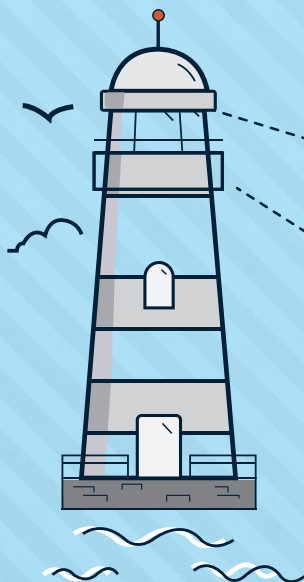
Was the first
campus-based
University in the UK

Won the Times and Sunday Times'
Good University Guide

**WELSH UNIVERSITY
OF THE YEAR 2017**

★ Is in the **UK TOP 15**
FOR STUDENT
SATISFACTION (NSS 2016) ★

Is in the
UK Top 30 for
Research
(REF 2014)



CAMPUSES AND OPEN DAYS

BAY CAMPUS IS HOME TO THE...

College of Engineering
School of Management

SINGLETON PARK CAMPUS IS HOME TO THE...

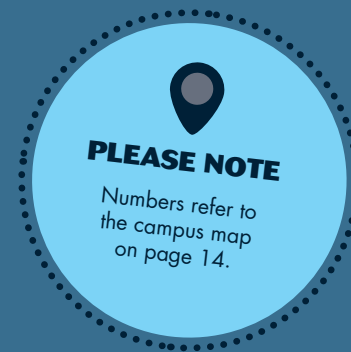
College of Arts and Humanities
College of Human and Health Sciences
College of Law and Criminology
Medical School
College of Science

We hold Undergraduate
Open Days throughout
the year.

Please see swansea.ac.uk/makingwaves
for further details and
to book a place.



BAY CAMPUS TOUR



START AT THE SCHOOL OF MANAGEMENT (7)

This building is the School of Management which comprises of over 150 staff and more than 2000 students. The building itself provides truly world-class facilities with an impressive communal Atrium, new teaching rooms, meeting room and IT equipment. Students can access a full range of student support services including getting internship support and careers advice. Work placements in Industry are available on all undergraduate degree programmes.

School of Management courses are accredited by the professional bodies CIM (Chartered institute of Marketing) and ACCA (The Association of Chartered Certified Accountants). The school of management also works closely with many corporate partners including HSBC, GWFX and DTR medical.

THE GREAT HALL (6)

The Great Hall stands at the heart of the Bay campus, the building was provided to the university by BP as part of their legacy to the University. The Great Hall provides space for music concerts, conferences, graduation and other large events. The first floor of the Great Hall has the capacity and facilities to host events for up to 900 people. As well as the main hall there are also nine teaching spaces ranging from 300 seat tiered lecture theatres to smaller seminar rooms for approximately 20 people.

At the back of the Great Hall there is a first floor terrace bar with spectacular views across Swansea Bay. The Great Hall Café Bar & Restaurant uses



the finest, freshest, locally sourced ingredients and serves a selection of coffee, soft drinks and alcohol. A board-walk gives direct access to the beach from the Campus.

BAY LIBRARY (5)

The Library is a key working hub for students at the Bay Campus, the library has floor to ceiling windows which provide great views over the Swansea Bay and the Site of Special Scientific Interest. The Bay Library is open 24 hours a day, has space for over 650 students to study including 400 open study space and silent study areas for 150 students as well as open access computers for students to use.

The Libraries on both campuses work together providing access to a full range of online journals, e-books and over 850,000 print items.

ENGINEERING EAST (3)

The College of Engineering is located over two buildings and is home to all our various Engineering degrees. Sport and Exercise Science is also housed within the College of Engineering and is ranked 1st in the UK for Graduate Prospects according to The Times University Guide 2017.

Engineering East offers undergraduate and postgraduate teaching facilities as well as work areas and research space for staff and research students. The entire footprint of the building is 11,000sqm and provides sufficient flexible space to allow large scale full size experiments as well as prototype development to take place. Engineering East houses eight research hubs that provide space



for up to 60 staff and 275 research students and is also home to a state-of-the-art Scanning and Electron Microscope facility. Engineering East will be home to both the Welsh Centre for Printing and Coating and the SPECIFIC project, an international consortium led by staff from Swansea University in collaboration with Tata Steel.

Institute (founded in Houston, Texas in 2011) a sister Institute of the Energy and Environmental Systems Institute at Rice University in Houston and an associate of the National Corrosion Research Centre at Texas A&M (supported by BP in North America). The Institute is also supported by industrial partners and focuses on the safety issues surrounding the development and expansion of existing energy processes.

ENGINEERING CENTRAL (4)

Engineering Central is the main administration and academic hub of the Engineering Quarter and includes the main College reception, three teaching rooms, laboratories and workshops for Aerospace, Mechanical and Chemical Engineering and also features a state-of-the-art flight simulator and brand new £1.2 million wind tunnel. It also includes five student computer rooms with a total of 400 computers. As you walk along the streets running through the building you will be able to see into the various laboratories including the Merlin Flight Simulator.

Engineering Central is also home to the team who designed the aerodynamics of the Bloodhound land speed record car.

Coffeeopolis is located within Engineering Central's internal street serving premium coffee and light snacks.

ORACLE II (1.1)

ORACLE stands for Outdoor Research and Community Learning Environment. This is an initiative led by the University's Biodiversity Working Group in collaboration with University spin-out company, the Down to Earth Project based in Gower, which is led by Swansea University graduates.

The ORACLE is located in the Botanical Garden and is constructed from the most ecologically low impact and locally sourced materials. Staff, students and the wider community are welcome to use this space for educational and cultural purposes.

THE ENERGY SAFETY RESEARCH INSTITUTE (ESRI) (1)

The Energy Safety Research Institute (ESRI) focuses on research on sustainable fuels, chemical processing, marine energy and tidal energy. There is a 30m wave testing facility in the building. The Institute has an international focus and is a constituent member of the Global Energy Safety

INSTITUTE OF STRUCTURAL MATERIALS (ISM) (2)

Institute of Structural Materials is home to Rolls-Royce University Technology Centre where research into gas turbine aircraft engines is conducted. It is also home to partnerships between the College of Engineering, Tata Steel and the SPECIFIC project.



TOWER INFORMATION CENTRE (9)

The Tower Information Centre is the main reception for Student Support Services, International Development Office, Cash Office, Money Advice and Support Office and Disability Office. This facility is called MyUni Hub and is open Monday - Friday from 08:30 – 17:30 and has highly trained and dedicated staff on hand to deal with any questions or worries.

St. Modwen Student Living is also housed within the Tower Information Centre and maintains the day-to-day operation requirements of the Swansea University Bay Campus accommodation. It provides and delivers administration, reception operation, caretaking, domestic cleaning, security, postal mail, grounds maintenance, waste and recycling management.

STUDENT RESIDENCES (8)

The accommodation at the Bay Campus is all brand new, en-suite accommodation and each residence is named after Princes, Princesses and Castles of Wales. The accommodation was designed by the Prince's Trust Foundation and has an American college style feel. The courtyards are used as social spaces to meet with friends. There is contents insurance with Endsleigh and Wi-Fi provided in all flats. There are designated quiet, mature and alcohol free areas. There is also an on-site launderette, bank and convenience shop. The University provides Campus security and Welfare Wardens 24 hours a day all year round.

STUDENTS UNION (8)

Every Swansea University student is automatically a member of the Union; part-time or full-time, undergrad or postgrad. The Students Union is a democratic organisation that's independent of the University. Your Students' Union is here to make sure you get the most out of your education and enjoy every aspect of University life whether that's by getting involved in activities, meeting people at events or socialising in the union venues. The Students' Union arranges large scale events such as the Freshers' Fair and the Summer Ball and is

responsible for over 80 societies, ranging from Amnesty International to the baking and choral society. The Abbey Meadow at the Singleton Park Campus is the site of the annual Students' Union Summer Ball, which turns the meadow into a small festival site for the day with three stages, a funfair and a range of bars and food outlets. Previous acts have included Pixie Lott, Tim Minchin, Florence and the Machine and DJ Fresh.

More information on our clubs and societies can be found on the Students Union website: www.swansea-union.co.uk

SPORT SWANSEA (8)

Sport Swansea runs the sports clubs that are at the heart of university life. This building houses a Sports Hall that can accommodate basketball, badminton, netball, volleyball, fencing and archery and we also have a second UniGym located over two rooms, with a range of cardiovascular equipment as well as free weights and resistance machines. Sport Swansea is responsible for over 50 sports clubs ranging from Boxing and Sailing to Ultimate Frisbee.



CATERING FACILITIES (8)

On the main road between the student residences and the Great Hall, there are catering outlets.

The Core is the main campus food court and offers a contemporary, large flexible space providing a variety of culinary styles and choices. 52° is the main café-bar and offers a relaxed, contemporary coffee shop by day and a lively student bar by night. 52° also caters for sport events with live sports on the big screen and regular entertainment across the week.

SINGLETON PARK CAMPUS



BAY CAMPUS



SINGLETON PARK CAMPUS

MAP

BUILDINGS

1	Finance Building
2	Singleton Abbey
2.1	Singleton Abbey, Stable Block
3	Keir Hardie Building
4	James Callaghan Building
5	Law Library
6	Mosque
7	Library and Information Centre
8.1	Faraday Building
8.2	Faraday Tower
8.3	Talbot Building
9	Wallace Building
9.4	Margam Building
11.1	Glyndŵr Building
11.2	Vivian Tower
11.4	Data Science
12	Grove Building
13	Grove Building Extension
14	Richard Price Building
15	Amy Dillwyn Building
16	Haldane Building
17	Fulton House
18	Union House
19.2	Energy Centre
24	Digital Technium
31	Taliesin Annexe
32	Taliesin Arts Centre
32.1	Egypt Centre
33	Institute of Life Science 1
34	Llŷr Building
36	Institute of Life Science 2/ Centre for NanoHealth
40	Porters' Traffic Control Lodge

STUDENT RESIDENCES

19.1	Kilvey
20	Preseli
21	Cefn Bryn
21.2	Rhossili
21.3	Rhossili
22	Penmaen
23	Horton
25	Oxwich
26	Langland
27	Caswell

SERVICES / FACILITIES

2	Admissions Office
2	Alumni Office
32	Art Gallery
32	Bank
17, 18	Bars
32	Bar
32	Bookshop
17, 18	Cash Points
32	Cash Point
17	Catering Office
7	Careers and Employability
2	Central Administration
17	Chaplaincy Centre
17	Conference Office
30	Crèche/Nursery
8.2	Department of Research and Innovation
23	Dental Surgery
3.1	Disability/Special Requirements Office
13	Disability Office - Assessment and Training Centre
17	Discovery - Student Volunteering

32.1	Egypt Centre
18	Estates Department
1	Finance Department
17	Health Centre
2	Human Resources
2.1	International Office
2.1	MyUni Hub
3.1	International Student Advisory Service
5	Law Library
7	Library & Information Services
2	Marketing
3	Media Resources
3.1	Money Advice & Support Office
6	Mosque
22	Occupational Health & Emergency Centre
17	Post Office
2.1	Postgraduate Office
17	Refectory
22	Residential Services
17, 18	Shops
13	Staff Development Unit
23	Student Counselling Service
3.1	Student Support Services
18	Students' Union
32	Theatre (Taliesin)
15	Transcription Centre
17	Travel Shop
23	Wellbeing Services

BAY CAMPUS MAP

1	Energy Safety Research Institute (ESRI)	4	Engineering Central	9	Estates and Facilities Reception
1.1	Oracle II	5	Bay Library	9	St Modwen Student Living Reception
2	Institute of Structural Materials (ISM)	6	Great Hall	9	MyUni Hub
3	Engineering East	7	School of Management		
3.1	Service Goods Yard	8	Student Residences		
		8	Students' Union		
		9	Tower Information Centre (TIC)		



**FOR FURTHER INFORMATION,
PLEASE CONTACT:**

Email: sro@swansea.ac.uk
Phone: 0044 (0)1792 295784



swansea.ac.uk/makingwaves