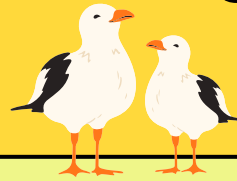


JUNE'24

PARTICIPATION@ CAMPUSLIFE



JUNE/MEHEFIN

Here we are, at the end of academic year 23/24! I hope this year has treated you well and that your next steps are exciting and fulfilling. This month's offerings are a mix of internal University support and events, as well as some information of what's going on in the wider community.

As per the usual, if there is anything that you need from me or that you feel I could help with, you're always welcome to email!

HAPUS STUDENT TOOLKIT

Colleagues in Student Life are looking to continue to improve resources for students, including making a few changes to Hapus. You may have heard of this as the Student Toolkit, providing info on wellbeing and general student life. The team would love more student advice to go in their resources and information to ensure it is as relevant and useful to you as students as possible. So, we would appreciate it hugely if you could take a few minutes to give your thoughts via the form.



WHAT'S ON?



NEED SUPPORT?



Swansea

student
minds

There are some fantastic resources across the university if you need help. Whether you're finding things hard at the moment and need someone to talk to, or if you need advice and guidance on something specific, these resources are there for you if and when you need them.

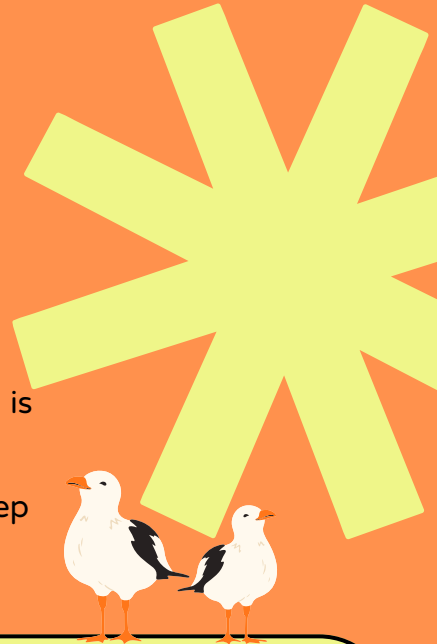
Click the links to find out more.



hapus
The Student Life Teacher
Prwydd Gymorth Awdurdod Myfyrwyr

REFUGEE WEEK - 17-23RD OF JUNE

Refugee Week is the world's largest arts & culture festival celebrating the contributions, creativity and resilience of refugees and people seeking sanctuary. Established in 1998 in the UK, this annual festival aligns with World Refugee Day, celebrated globally on June 20th. This year the theme is 'Home'. Events across the university will be celebrating the week and the theme of home; these will be run by our new Sanctuary Access Officer. Keep an eye on the CampusLife social media for more information!



LGBTQ+ ART FAIRS AND SHOWCASE

In celebration of Pride month, local artists and creators have come together to organise two events showcasing art, music, and other talents. Bunkhouse's Joio Hoyw event is on today, the 13th of June, between 1pm and 11pm. Elysium is running a makers fair on the 26th.

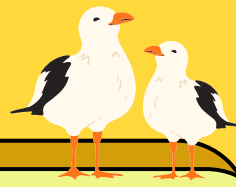
ELYSIUM
GALLERY / VENUE / BAR



CAMPUSLIFE LGBTQ+ COFFEE MORNINGS

A lovely opportunity to meet others in the community across the uni, CampusLife run a weekly LGBTQ+ coffee morning from the Haven on Bay campus.





SUMMER ACCOMMODATION

If you are someone in need of accommodation over the summer, you may know that as a student supported by Participation@CampusLife you are entitled to 365 day a year university owned accommodation. If this sounds like something you would like to take up, please get in touch with accommodation sooner rather than later to ensure your place. Applications are open now, please get yours in to ensure your arrangements are made.



THINKING ABOUT HOUSING?

After first year, many students will move off campus and into private accommodation, either independently or with a group of others. If you are looking to move out into the bustling wider Swansea area, the Students Union has a fab guide on housing in the city and tips for finding the right place for you. Click the pictures to find out.



MOVING HOUSE/ACCOMMODATION?

It can be hectic to move between accommodations, but there is advice and guidance to help it go as smoothly as it can. The Students' Union have put together a great set of tips on moving and packing to help you out.



STUDENT FINANCE APPLICATIONS

It's really important that you complete your student finance applications as soon as possible to avoid any funding issues going in to next academic year. If you are having difficulty or need advice on completing your application, please get in touch to have a chat about how we can help. If you have suspended your studies, please get in touch so we can make sure your funding is all as it should be.

REGISTERING TO VOTE

Are you registered to vote? Whether you are voting in Swansea or elsewhere, it is important you register before the deadline to ensure you can make your choice on the day. This time, you will also be required to present specific forms of valid voter ID. It's not too late to apply for a form of ID and there are a few ways to do this. More information on voter ID and applying can be found here: <https://www.gov.uk/apply-for-photo-id-voter-authority-certificate>

IN SWANSEA FOR SUMMER?

We're lucky to be surrounded by some amazing sights and scenery in Swansea and if you're around for the summer, it's the perfect time to take the opportunity to explore some of the places you might not have had the time to during term time. Here's a list of a huge number of free and super cheap things to see and do.



These links are for organisations that support specifically for care leavers and people who are estranged, if you would like to know more about them click on the links.



CLASS
CYMRU

propel
BY BECOME.

If you do not wish to receive these newsletters, please opt out by emailing participation.campuslife@swansea.ac.uk